

Hydro Beam X2



Light Efficiency:

6 Lumen/Watt

Light Quality:

CRI: 77.6

Color Temperature:

3385 K

Output: 3103 lm

Peak: 4288528 cd

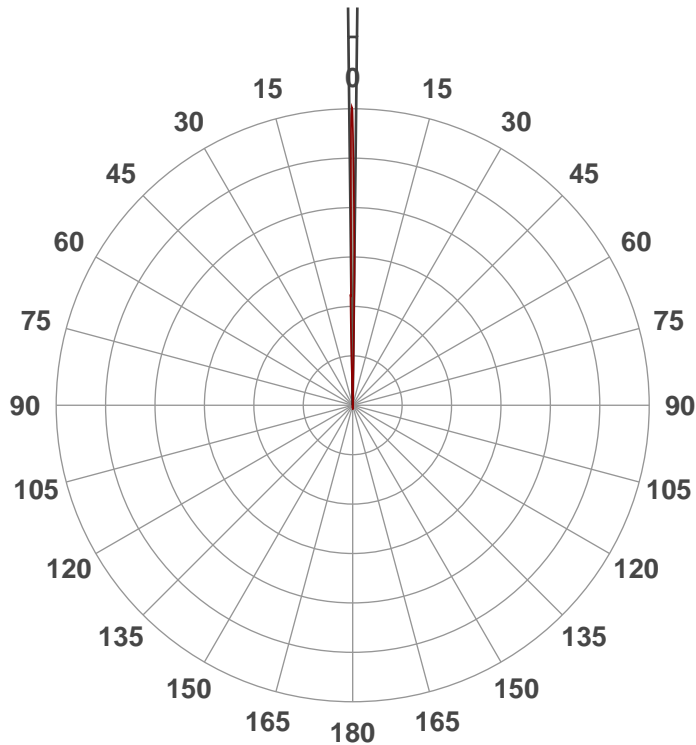
Power: 512 W

PF: 1.0



Beam Angle

1.3°



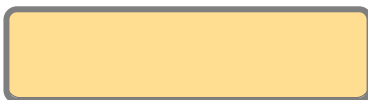
Test:

3200K

Date:

7/16/2019

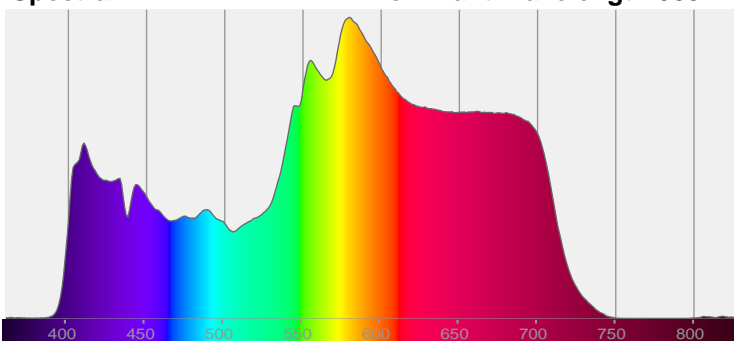
Note:



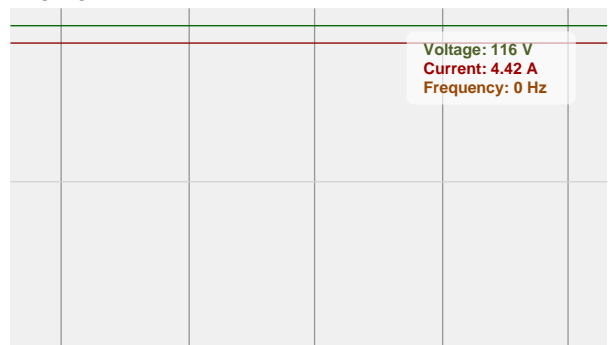
CIE 1931
x: 0.406
y: 0.378

Spectra

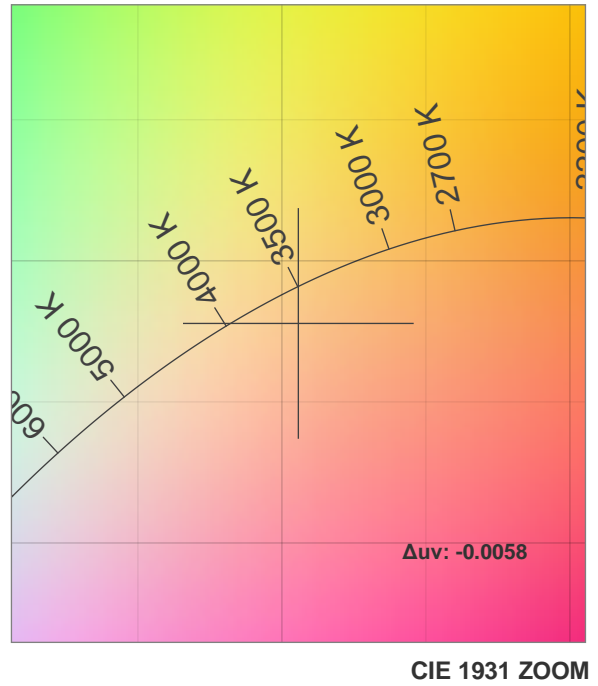
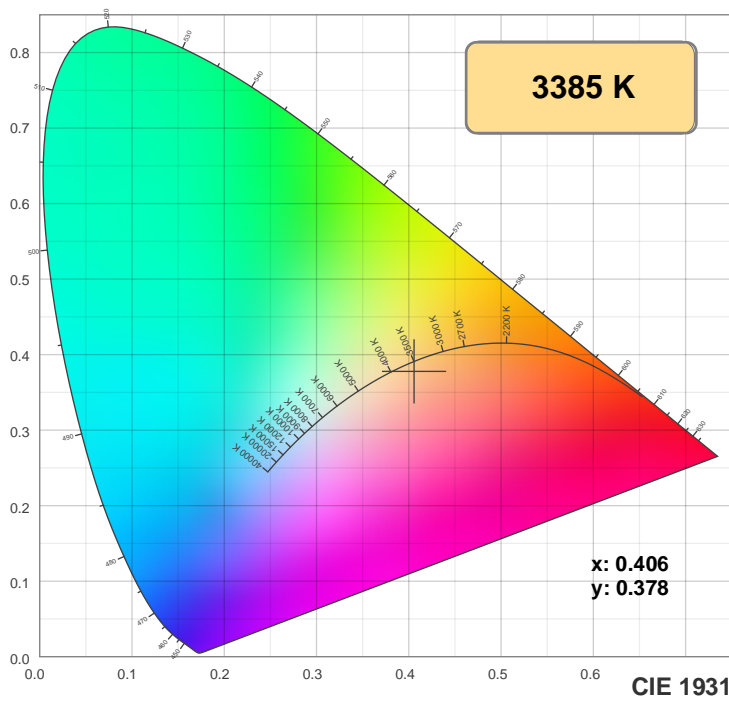
Dominant Wavelength: 585nm



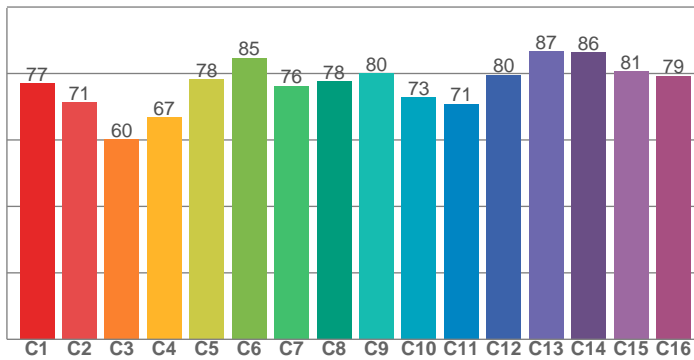
Power



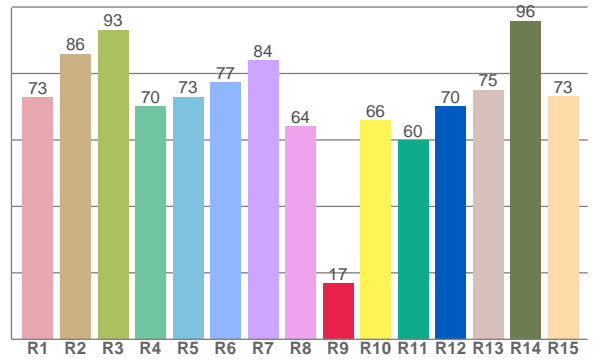
Color Details



TM30: 76.0



CRI: 77.6 (R1-R8)



CRI R values, only R1-R8 are used to calculate final CRI value

R1	R2	R3	R4	R5	R6	R7	R8	R9	R10	R11	R12	R13	R14	R15
72.9	85.9	93.1	70.2	73.0	77.4	83.9	64.1	16.8	65.9	59.9	70.2	75.1	95.9	73.0

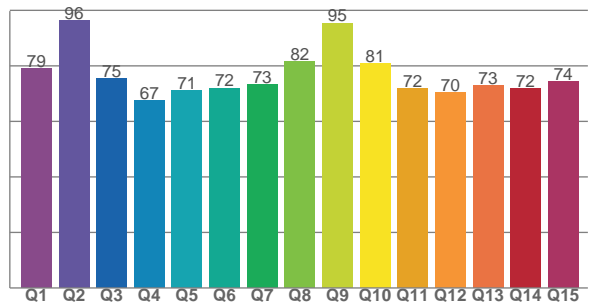
TM30 C values, 16 binned values out of total of 99 C values

C1	C2	C3	C4	C5	C6	C7	C8	C9	C10	C11	C12	C13	C14	C15	C16
77.1	71.3	60.2	66.8	78.2	84.7	76.2	77.6	80.0	72.8	70.8	79.5	86.6	86.4	80.6	79.2

CQS Q values

Q1	Q2	Q3	Q4	Q5	Q6	Q7	Q8	Q9	Q10	Q11	Q12	Q13	Q14	Q15
79.0	96.2	75.3	67.4	71.1	71.9	73.3	81.5	95.4	80.8	71.9	70.3	72.8	71.8	74.3

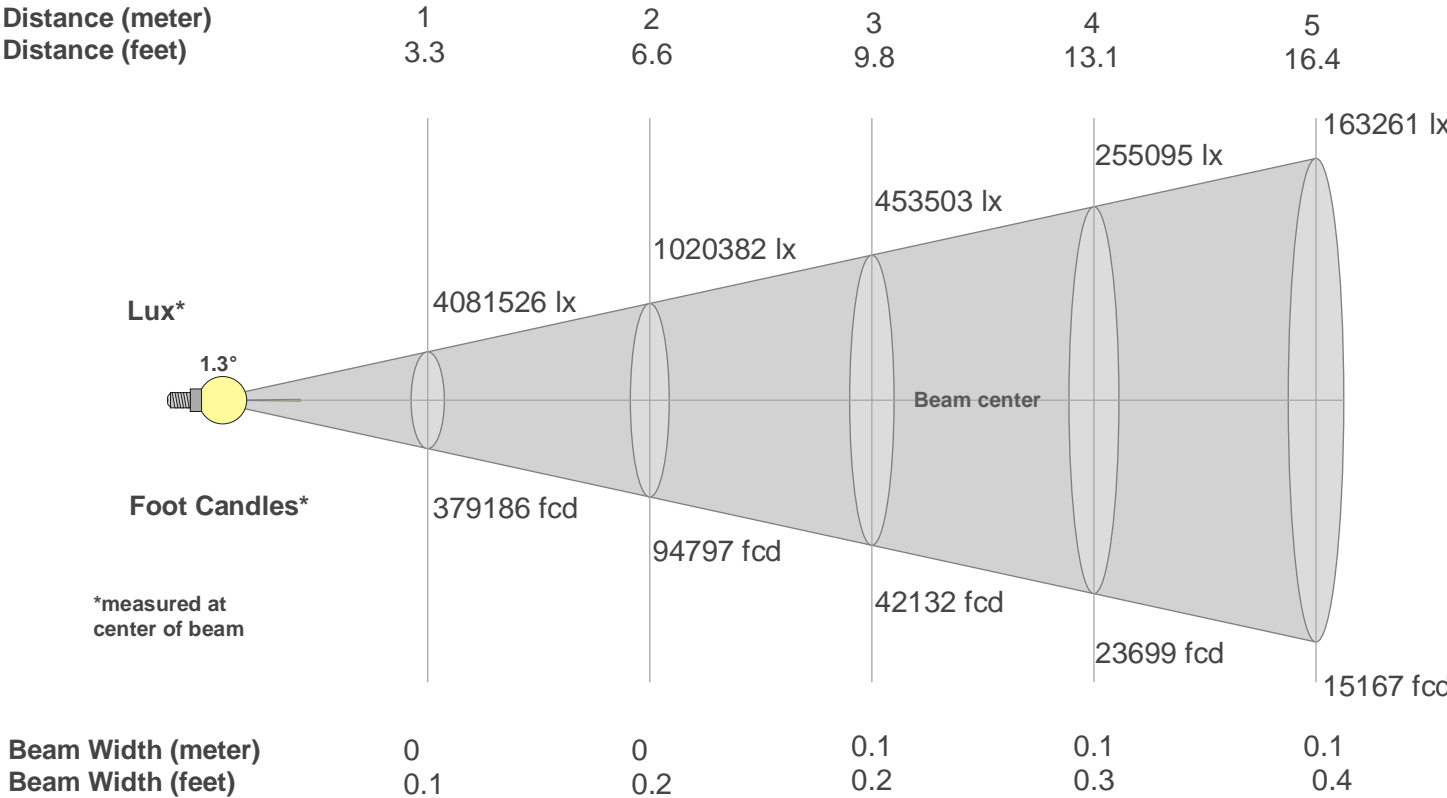
CQS: 75.4



Color Parameters

Color Temperature	Color Rendering Index	Red Component	Color Fidelity	Color Gamut	Color Quality Scale	Color Coordinate CIE 1931	Color Coordinate CIE 1931	Color Coordinate	Color Coordinate	Color Deviation from Black Body
CCT	CRI	CRI R9	TM30 Rf	TM30 Rg	CQS	x	y	u	v	Δuv
3385 K	77.6	16.8	76.0	95.8	75.4	0.406	0.378	0.241	0.337	-0.0058

Beam Details



Beam Intensities from 1-20m																				
m	1	2	3	4	5	6	7	8	9	10	11	12	13	14	15	16	17	18	19	20
ft	3.3	6.6	9.8	13.1	16.4	19.7	23	26.2	29.5	32.8	36.1	39.4	42.7	45.9	49.2	52.5	55.8	59.1	62.3	65.6
lx	4081526	1020382	453503	255095	163261	113376	83296	63774	50389	40815	33732	28344	24151	20824	18140	15943	14123	12597	11306	10204
fcd	379186.2	94796.5	42131.8	23699.1	15167.4	10532.9	7738.5	5924.8	4681.3	3791.9	3133.8	2633.2	2243.7	1934.6	1685.3	1481.2	1312.1	1170.3	1050.4	948

Intensities in 0° C-plane																				
0°	1°	2°	3°	4°	5°	6°	7°	8°	9°	10°	11°	12°	13°	14°	15°	16°	17°	18°	19°	
4.1M	1.6M	0.0M	0.0M	0.0M	0.0M	0.0M	0.0M	0.0M	0.0M	0.0M	0.0M	0.0M	0.0M	0.0M	0.0M	0.0M	0.0M	0.0M	0.0M	
100%	39%	0%	0%	0%	0%	0%	0%	0%	0%	0%	0%	0%	0%	0%	0%	0%	0%	0%	0%	

Intensities in 90° C-plane																				
0°	1°	2°	3°	4°	5°	6°	7°	8°	9°	10°	11°	12°	13°	14°	15°	16°	17°	18°	19°	
4.1M	1.6M	0.0M	0.0M	0.0M	0.0M	0.0M	0.0M	0.0M	0.0M	0.0M	0.0M	0.0M	0.0M	0.0M	0.0M	0.0M	0.0M	0.0M	0.0M	
100%	39%	0%	0%	0%	0%	0%	0%	0%	0%	0%	0%	0%	0%	0%	0%	0%	0%	0%	0%	

Intensities in 180° C-plane																				
0°	1°	2°	3°	4°	5°	6°	7°	8°	9°	10°	11°	12°	13°	14°	15°	16°	17°	18°	19°	
4.1M	0.8M	0.0M	0.0M	0.0M	0.0M	0.0M	0.0M	0.0M	0.0M	0.0M	0.0M	0.0M	0.0M	0.0M	0.0M	0.0M	0.0M	0.0M	0.0M	
100%	20%	0%	0%	0%	0%	0%	0%	0%	0%	0%	0%	0%	0%	0%	0%	0%	0%	0%	0%	

Intensities in 270° C-plane																				
0°	1°	2°	3°	4°	5°	6°	7°	8°	9°	10°	11°	12°	13°	14°	15°	16°	17°	18°	19°	
4.1M	0.8M	0.0M	0.0M	0.0M	0.0M	0.0M	0.0M	0.0M	0.0M	0.0M	0.0M	0.0M	0.0M	0.0M	0.0M	0.0M	0.0M	0.0M	0.0M	
100%	20%	0%	0%	0%	0%	0%	0%	0%	0%	0%	0%	0%	0%	0%	0%	0%	0%	0%	0%	

Beam Angle 50%	Field Angle 10%	Cutoff Angle 2,5%	Intensity Ratio in 120° Cone	Intensity Ratio in 90° Cone
1.3°	2.7°	3°	99.7%	99.7%